



LPF | LEVELING THE PLAYING FIELD

COLLECTION DRIVE GAME PLAN

1

DECIDE WHERE TO COLLECT

Determine where you can collect the most equipment. Suggestions on where to collect are detailed below. We are happy to brainstorm with you on the phone!

2

GET THE WORD OUT

Let your friends, teammates, and neighbors know about the collection drive through flyers, emails, social media, etc.

3

COLLECT GEAR

Gear can be dropped off at a designated location, a drop box, or at your home

4

DROP OFF AT WAREHOUSE

All donations can be transported to an LPF warehouse where it will be inventoried, sorted, and re-distributed to kids in need

READY TO RUN YOUR OWN COLLECTION DRIVE?

REGISTER WITH US AT
INFO@LEVELINGTHEPLAYINGFIELD.ORG

FREQUENTLY ASKED QUESTIONS

Q: How do we get the equipment to you?

A: There are two ways to get collected equipment to LPF:

1. You can drop the equipment off at the warehouse
2. Arrange a pick-up of your equipment (availability may vary)

Q: Can we receive a donation bin from the organization?

A: Branded bins are available for pick-up. Collectors can also use any box/plastic bin from home that they see fit.

Q: Can we volunteer at the warehouse?

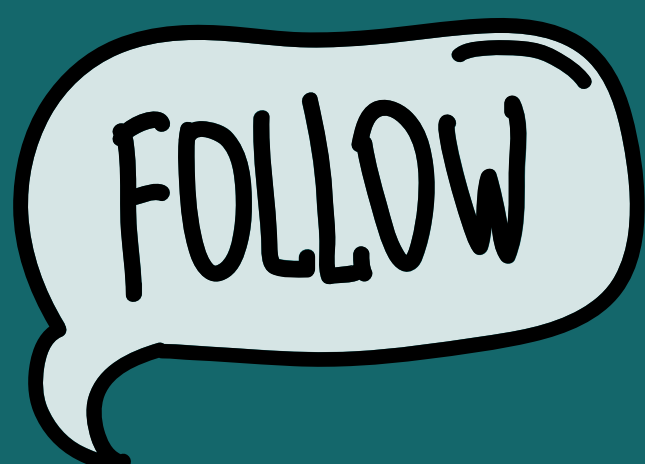
A: YES! We are always looking for volunteers to help us inventory & sort incoming equipment donations. You are welcome to volunteer as an individual or group to help process your own donation and get it back out into the community.

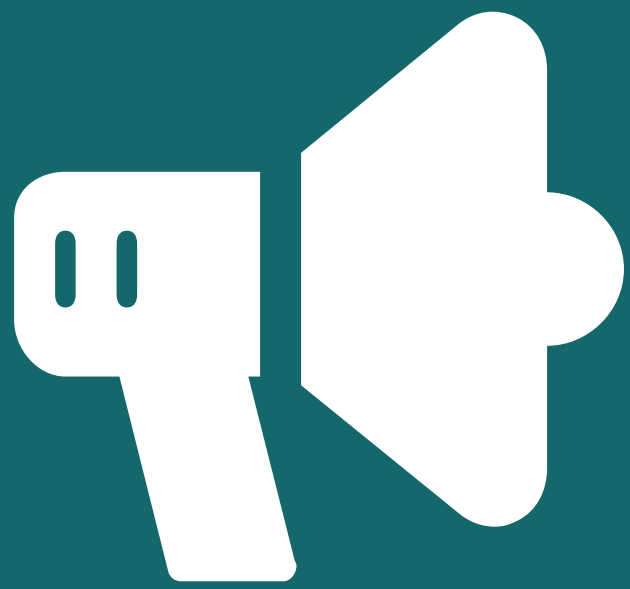
Q: Is there another way for people to donate if they do not have equipment?

A: Yes, we accept monetary donations to keep our operations up and running. Donations can be made on our website at www.levelingtheplayingfield.org or checks can be made out to "Leveling the Playing Field." Collectors can also create their own fundraiser with help from our staff!

GENERAL TIPS

- Print up and display posters throughout your area starting a few weeks before the collection
- Publicize the collection by sending an email to your family, friends, classmates, social media followers etc...
- Make announcements during programming
- Ask local sports teams and their coaches to participate as well as your PE teachers!
- Partner with schools, religious centers, community centers and other establishments in the community to increase the impact of the collection, Ask them if you can place a donation bin.
- Contact sporting good stores and local Universities in the community for potential donations
- Post about your collection on a neighborhood listserv and/or social media page





HOW TO PROMOTE YOUR COLLECTION DRIVE

EMAIL BLURB

Clean out your garages! I am working with the non-profit Leveling the Playing Field to collect used sporting goods to be donated to under-resourced youth athletes in need of equipment. The cost of sports equipment has left a growing number of kids on the sidelines and I am working to ensure those kids have access to completely free equipment so they can get off the sidelines and in the game!

All donations will be distributed to kids in my local area. Visit lpfsports.org to see all LPF locations across the US.

For information on what items we accept [CLICK HERE](#). To make a financial contribution to LPF's cause, visit their [Finances and Development](#) page.

If you have any questions please do not hesitate to email info@levelingtheplayingfield.org

SOCIAL MEDIA POST

Clean out your garage! I am working with Leveling the Playing Field to collect used sporting goods for local students in need. For a list of what items we are accepting, visit www.levelingtheplayingfield.org.

TAG US!

www.facebook.com/LevelingthePlayingFieldInc

[Twitter.com/LPFsports](https://twitter.com/LPFsports)

[Instagram.com/LPFsports](https://www.instagram.com/LPFsports)

LPF | LEVELING THE
PLAYING FIELD